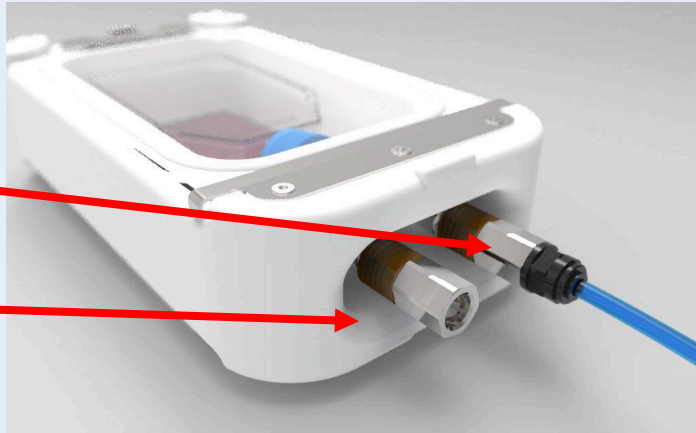


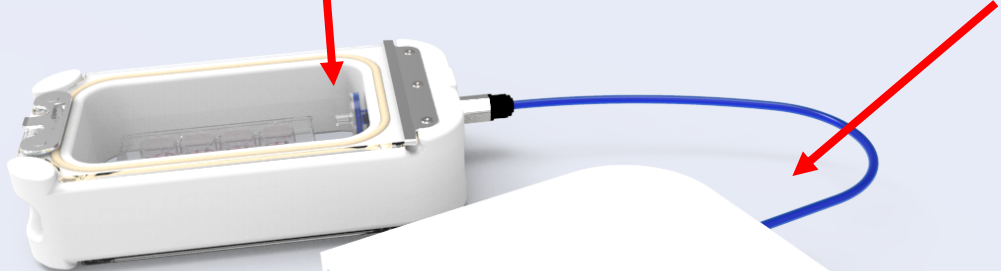
CondoCell™ Quick Start Guide

1. Place Atmosphere Circulation Unit (ACU) in incubator. Run power cord in through a cable port.

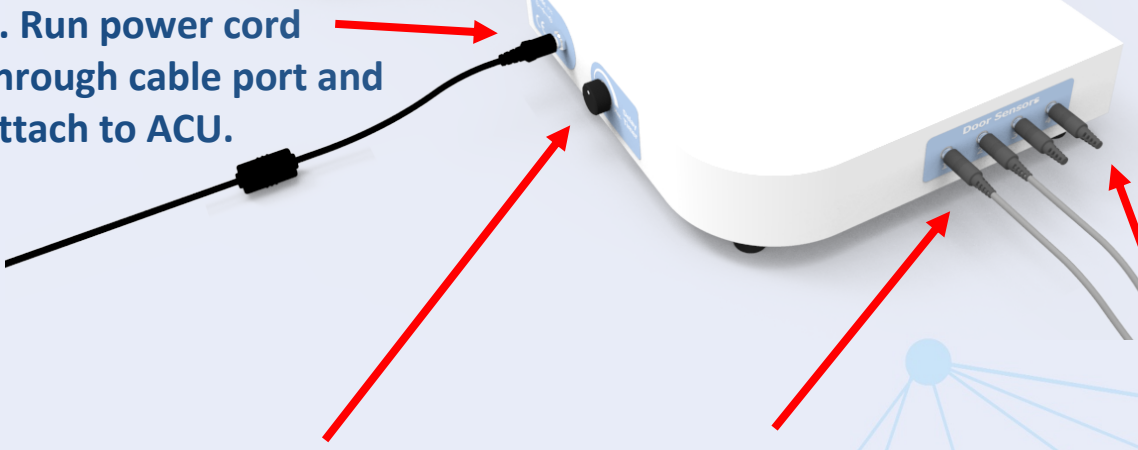
2. On one inlet at the back of the Condo, attach external hose coupling and internal syringe style filter. Add blank coupling to exhaust.



3. Attach hose to ACU.



4. Run power cord through cable port and attach to ACU.



5. Set dial to incubator's recovery time (commonly 20 mins).

6. Attach one sensor cable per inner glass door & add blanks to the remaining ports.

7. Install sensor cable into holder. Attach sensor holder to shelf or wall with provided adhesive.



ACU installed in incubator.

8. Attach magnet on glass door, aligned with shelf mounted sensor. Sensor will light red when properly aligned and powered.

